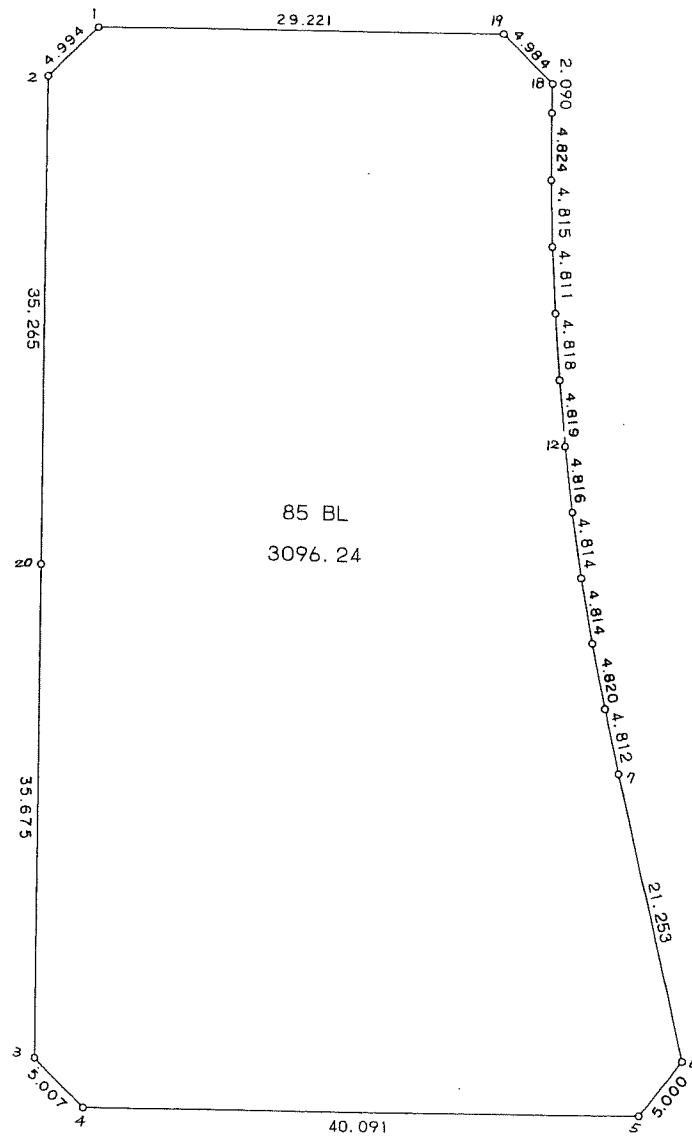
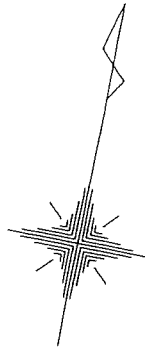


85 街区



<< 四街道南土地区画整理事業 >>

* * 面積計算 (倍横距法) * *

地 器械点	番 : 視準点	85 BL 内角	方向角	距離	緯距	經距	X座標	Y座標	倍横距	倍面積
85-1	85-2	134-56-55	214-41-31	4.994	-4.107	-2.843	-38539.370	31428.506	-2.843	11.676201
85-2	85-20	134-59-46	169-41-17	35.265	-34.695	6.313	-38574.065	31434.819	0.627	-21.753765
85-20	85-3	180-03-16	169-44-33	35.675	-35.104	6.353	-38609.169	31441.172	13.293	-466.637472
85-3	85-4	134-32-57	124-17-30	5.007	-2.821	4.136	-38611.990	31445.308	23.782	-67.089022
85-4	85-5	135-23-46	79-41-16	40.091	7.176	39.444	-38604.814	31484.752	67.362	483.389712
85-5	85-6	128-04-57	27-46-13	5.000	4.425	2.330	-38600.389	31487.082	109.136	482.926800
85-6	85-7	128-33-30	336-19-43	21.253	19.465	-8.533	-38580.924	31478.549	102.933	2003.590845
85-7	85-8	180-43-43	337-03-26	4.812	4.431	-1.876	-38576.493	31476.673	92.524	409.973844
85-8	85-9	181-03-35	338-07-01	4.820	4.472	-1.796	-38572.021	31474.877	88.852	397.346144
85-9	85-10	181-22-06	339-29-07	4.814	4.509	-1.688	-38567.512	31473.189	85.368	384.924312
85-10	85-11	181-39-44	341-08-51	4.814	4.556	-1.555	-38562.956	31471.634	82.125	374.161500
85-11	85-12	181-02-13	342-11-04	4.816	4.586	-1.474	-38558.370	31470.160	79.096	362.734256
85-12	85-13	182-00-20	344-11-24	4.819	4.636	-1.313	-38553.734	31468.847	76.309	353.768524
85-13	85-14	181-08-50	345-20-14	4.818	4.661	-1.219	-38549.073	31467.628	73.777	343.874597
85-14	85-15	180-48-12	346-08-26	4.811	4.671	-1.153	-38544.402	31466.475	71.405	333.532755
85-15	85-16	181-38-10	347-46-36	4.815	4.706	-1.019	-38539.696	31465.456	69.233	325.810498
85-16	85-17	181-28-56	349-15-32	4.824	4.740	-0.899	-38534.956	31464.557	67.315	319.073100
85-17	85-18	180-55-17	350-10-49	2.090	2.059	-0.356	-38532.897	31464.201	66.060	136.017540
85-18	85-19	134-30-44	304-41-33	4.984	2.837	-4.099	-38530.060	31460.102	61.605	174.773385
85-19	85-1	135-03-03	259-44-36	29.221	-5.203	-28.753	-38535.263	31431.349	28.753	-149.601859
									倍面積	6192.491895
									面積	3096.24