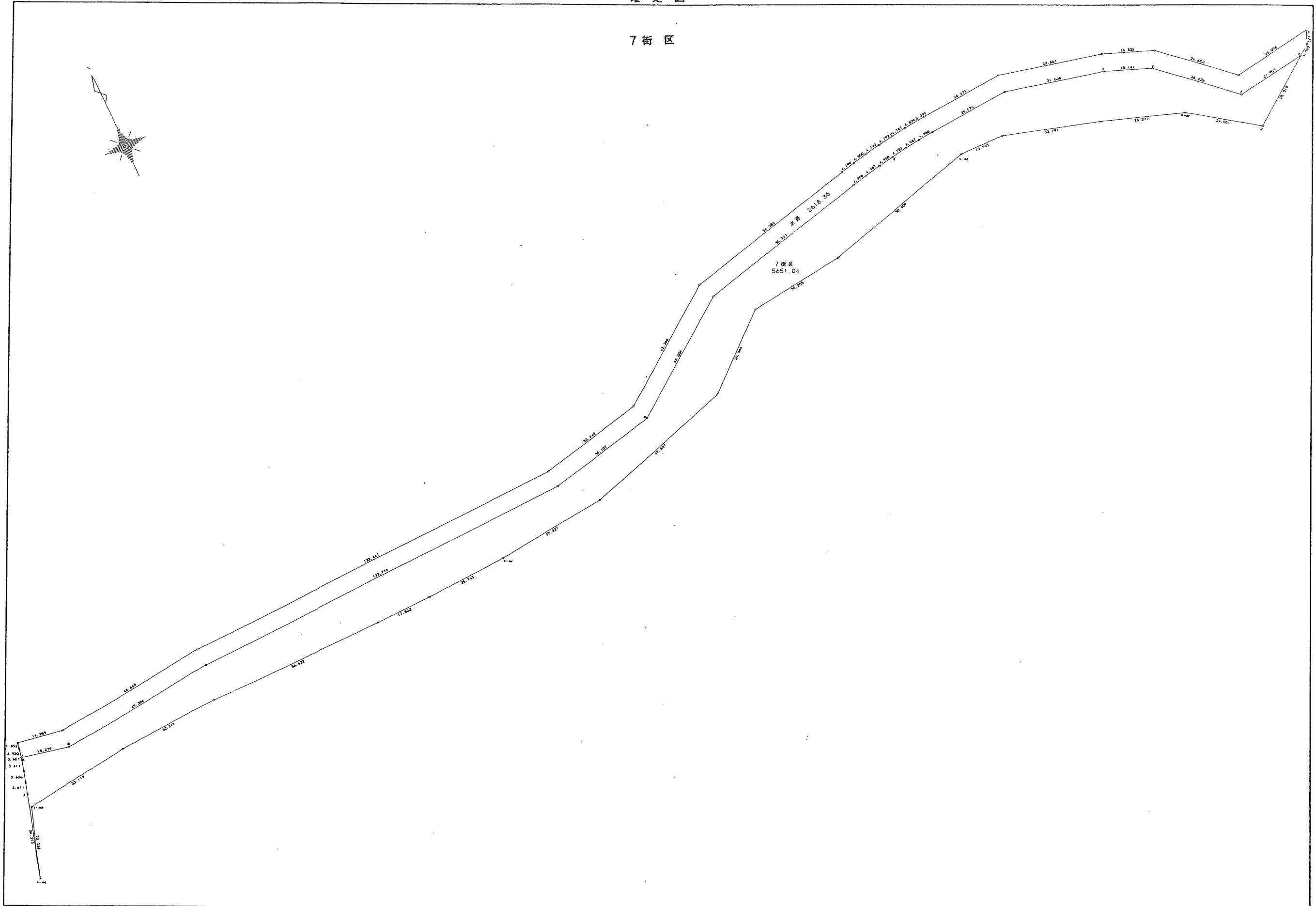


7 街区



<< 四街道南土地区画整理事業 >>

* * 面積計算 (倍横距法) * *

地 器械点	番 視準点	7 BL 内角	方向角	距離	緯距	経距	X座標	Y座標	倍横距	倍面積
7-1	7-2	90-56-06	192-26-18	0.687	-0.671	-0.148	-39407.696	29735.912	-0.148	0.099308
7-2	7-3	181-17-24	193-43-42	3.611	-3.508	-0.857	-39411.204	29735.055	-1.153	4.044724
7-3	7-4	181-03-06	194-46-48	3.606	-3.487	-0.920	-39414.691	29734.135	-2.930	10.216910
7-4	7-5	180-41-17	195-28-05	3.611	-3.480	-0.963	-39418.171	29733.172	-4.813	16.749240
7-5	K-166	180-26-06	195-54-11	26.393	-25.383	-7.232	-39443.554	29725.940	-13.008	330.182064
K-166	K-165	1-34-50	17-29-01	22.338	21.306	6.711	-39422.248	29732.651	-13.529	-288.248874
K-165	K-164	244-11-05	81-40-06	33.119	4.799	32.769	-39417.449	29765.420	25.951	124.538849
K-164	K-163	184-58-52	86-38-58	32.219	1.883	32.164	-39415.566	29797.584	90.884	171.134572
K-163	K-162	182-49-20	89-28-18	56.622	0.522	56.620	-39415.044	29854.204	179.668	93.786696
K-162	K-161	178-25-24	87-53-42	17.832	0.655	17.820	-39414.389	29872.024	254.108	166.440740
K-161	K-160	178-59-16	86-52-58	25.763	1.401	25.725	-39412.988	29897.749	297.653	417.011853
K-160	K-159	176-35-23	83-28-21	35.327	4.016	35.098	-39408.972	29932.847	358.476	1439.639616
K-159	K-158	169-09-08	72-37-29	49.607	14.814	47.343	-39394.158	29980.190	440.917	6531.744438
K-158	K-157	156-17-53	48-55-22	29.044	19.084	21.894	-39375.074	30002.084	510.154	9735.778936
K-157	K-156	213-51-09	82-46-31	30.255	3.805	30.015	-39371.269	30032.099	562.063	2138.649715
K-156	K-155	171-55-36	74-42-07	50.409	13.300	48.623	-39357.969	30080.722	640.701	8521.323300
K-155	K-154	196-18-41	91-00-48	13.965	-0.247	13.963	-39358.216	30094.685	703.287	-173.711889
K-154	K-153	195-26-58	106-27-46	30.791	-8.726	29.529	-39366.942	30124.214	746.779	-6516.393554
K-153	K-152	182-33-55	109-01-41	26.277	-8.567	24.841	-39375.509	30149.055	801.149	-6863.443483
K-152	7-6	195-57-44	124-59-25	24.031	-13.780	19.687	-39389.289	30168.742	845.677	-11653.429060
7-6	7-7	107-52-50	52-52-15	25.018	15.101	19.946	-39374.188	30188.688	885.310	13369.066310
7-7	7-8	28-08-33	261-00-48	21.959	-3.430	-21.689	-39377.618	30166.999	883.567	-3030.634810
7-8	7-9	230-52-19	311-53-07	28.226	18.845	-21.014	-39358.773	30145.985	840.864	15846.082080
7-9	7-10	159-31-11	291-24-18	15.141	5.526	-14.097	-39353.247	30131.888	805.753	4452.591078
7-10	7-11	171-55-07	283-19-25	31.608	7.284	-30.757	-39345.963	30101.131	760.899	5542.388316

<< 四街道南土地区画整理事業 >>

器械点	視準点	内角	方向角	距離	緯距	経距	X座標	Y座標	倍横距	倍面積
7-11	7-12	162-07-42	265-27-07	25.676	-2.036	-25.595	-39347.999	30075.536	704.547	-1434.457692
7-12	7-13	179-15-25	264-42-32	4.988	-0.460	-4.967	-39348.459	30070.569	673.985	-310.033100
7-13	7-14	178-29-48	263-12-20	4.987	-0.590	-4.952	-39349.049	30065.617	664.066	-391.798940
7-14	7-15	178-30-59	261-43-19	4.987	-0.718	-4.935	-39349.767	30060.682	654.179	-469.700522
7-15	7-16	178-29-20	260-12-39	4.988	-0.848	-4.915	-39350.615	30055.767	644.329	-546.390992
7-16	7-17	178-30-55	258-43-34	4.987	-0.975	-4.891	-39351.590	30050.876	634.523	-618.659925
7-17	7-18	178-29-09	257-12-43	4.988	-1.104	-4.864	-39352.694	30046.012	624.768	-689.743872
7-18	7-19	179-15-49	256-28-32	55.777	-13.044	-54.230	-39365.738	29991.782	565.674	-7378.651656
7-19	7-20	156-52-08	233-20-40	43.384	-25.900	-34.804	-39391.638	29956.978	476.640	-12344.976000
7-20	7-21	203-28-43	256-49-23	35.107	-8.003	-34.183	-39399.641	29922.795	407.653	-3262.446959
7-21	7-22	190-50-43	267-40-06	122.779	-4.995	-122.677	-39404.636	29800.118	250.793	-1252.711035
7-22	7-23	176-00-44	263-40-50	49.386	-5.436	-49.086	-39410.072	29751.032	79.030	-429.607080
7-23	7-1	197-49-22	281-30-12	15.279	3.047	-14.972	-39407.025	29736.060	14.972	45.619684
									倍面積	11302.048986
									面積	5651.02